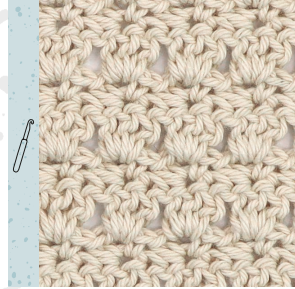
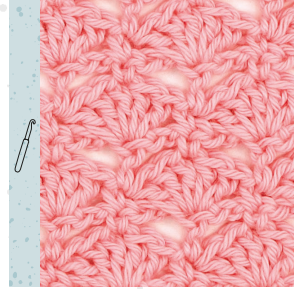


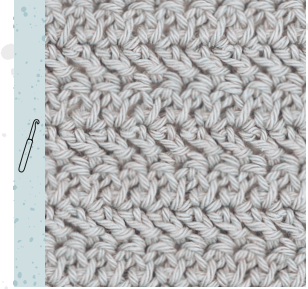
**Sprig**  
page 49



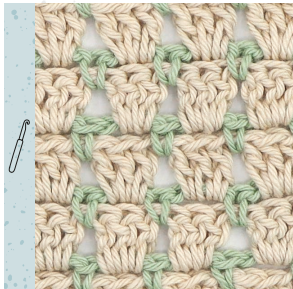
**Primrose**  
page 50



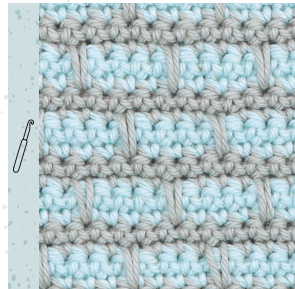
**Little Fans**  
page 51



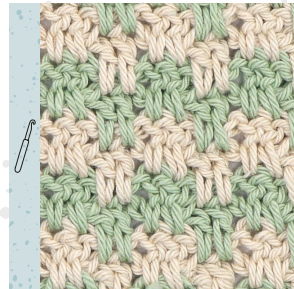
**Herringbone  
Double Crochet**  
page 52



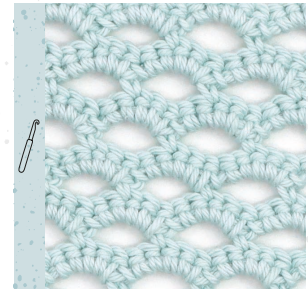
**Block**  
page 53



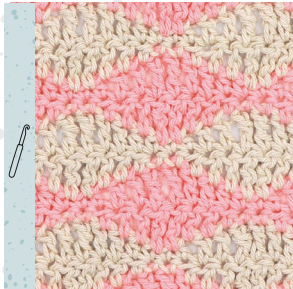
**Brick**  
page 54



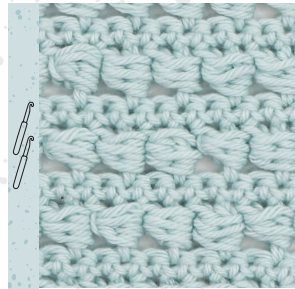
**Leaping Stripes**  
page 55



**Eyelet**  
page 56



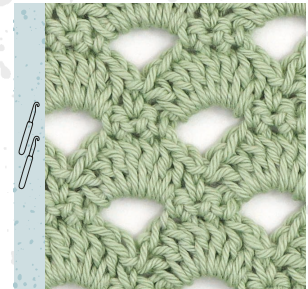
**Rolling Waves**  
page 57



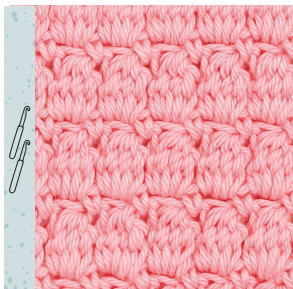
**Bead**  
page 58



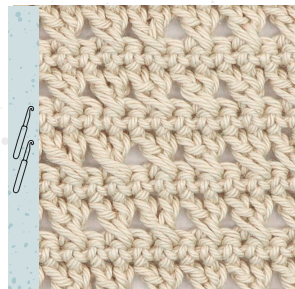
**Blocked Bead**  
page 59



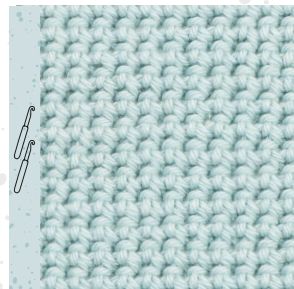
**Arcade**  
page 60



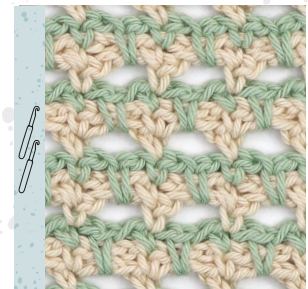
**Cluster**  
page 61



**Crossed Double Crochet**  
page 62



**Thermal**  
page 63



**Spike**  
page 64

## WORKING IN THE ROUND: CHAIN METHODS

To make circular-shaped projects, or to make granny squares, you will often need to work in the round. There are different ways of 'working in the round', each giving you different results. The foundation-ring method is used for projects where you want to make tubular shapes. The flat-circle method is useful for flatter circular shapes (like granny squares). For a more advanced method of making a flat circle, which has no gap in the middle, you could use the magic ring (adjustable loop) method instead, which you can find on page 26.

### Foundation-ring method

This is the easiest method, and is sometimes known as the foundation-chain method. By joining the first and last stitch of a foundation chain, you can form this foundation ring.

- 1** Start by making the required number of chains for your foundation chain. Slip stitch into the first chain.
- 2** Crochet your turning chain then work your stitches into each chain to complete one round.
- 3** Slip stitch into the first stitch of the round. Repeat steps 2 and 3 as necessary.



### Flat-circle method

This method consists of making a few chains and then working your stitches into the first chain to make a ring. If you don't like making a magic ring (adjustable loop), this is the next best thing! I'm working single crochet (UK double crochet) stitches here.

- 1** Start by making the required number of chains.
- 2** Insert your hook into the first chain and work your first stitch. Continue to work all the remaining stitches into the same first chain, as shown.
- 3** Insert the hook into the first stitch then slip stitch to join the ends of the round.





# Houndstooth

## Skill level

Beginner

## Multiples

2 + 1

## Stitches used

ch, sc (UK dc), dc (UK tr)

## Colours

Vanilla cream (A),  
Blush Pink (B)



## INSTRUCTIONS

**Row 1:** sc (UK dc) in second ch from hook (skipped ch does not count as st), dc (UK tr) in next ch, [sc (UK dc) in next ch, dc (UK tr) in next ch] across, changing to yarn B in last yo of the last ch. Turn.

**Row 2:** 1 ch (does not count as st here or throughout), [sc (UK dc) in next st, dc (UK tr) in next st] across, changing to yarn A in last yo of the last st. Turn.

Rep Row 2, alternating between yarn A and B by changing colours in the last yo of the final st on each row, until desired height.

Fasten off and sew in ends.

# Spider

## Skill level

Beginner

## Multiples

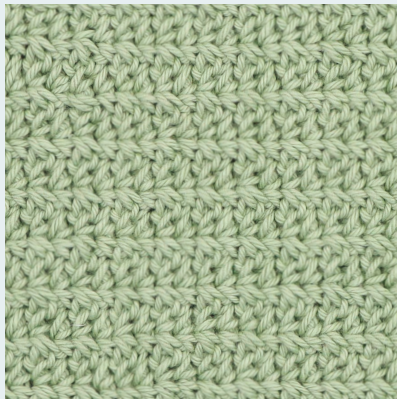
2 + 2

## Stitches used

ch, sc (UK dc)

## Colour

Pistachio Green



## INSTRUCTIONS

**Row 1:** [sc (UK dc), 1 ch, sc (UK dc)] in second ch from hook (skipped ch does not count as st), \*skip 1 ch, [sc (UK dc), 1 ch, sc (UK dc)] in next ch, rep from \* across. Turn.

**Row 2:** \*[sc (UK dc), 1 ch, sc (UK dc)] in next ch sp from previous row, rep from \* across. Turn.

Rep Row 2 until desired height.

Fasten off and sew in ends.

# Grit

## Skill level

Beginner

## Multiples

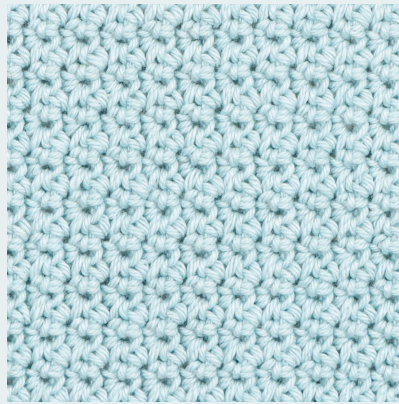
2 + 1

## Stitches used

ch, sc (UK dc)

## Colour

Sea Foam



## INSTRUCTIONS

**Row 1:** sc (UK dc) in second ch from hook (skipped ch does not count as st), \*skip next ch, 2 sc (UK 2 dc) in next ch, rep from \* across until 1 ch rem, sc (UK dc) in last ch. Turn.

**Row 2:** 1 ch (does not count as st here and throughout), sc (UK dc) in first st, \*skip next st, 2 sc (UK 2 dc) in next st, rep from \* across until 1 st rem, sc (UK dc) in last st. Turn.

Rep Row 2 until desired height. Fasten off and sew in ends.

# Crunch

## Skill level

Beginner

## Multiples

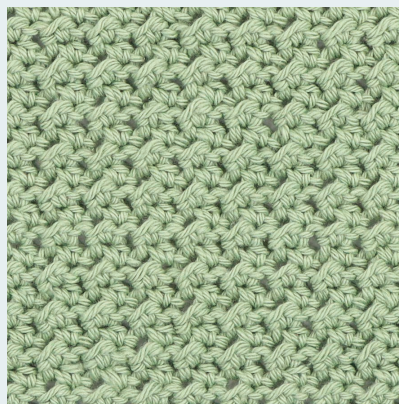
2 + 2

## Stitches used

ch, sl st, hdc (UK htr)

## Colour

Pistachio Green



## INSTRUCTIONS

**Row 1:** sl st in second ch from hook (skipped ch does not count as st), \*hdc (UK htr), sl st in next st, rep from \* across. Turn.

**Row 2:** 2 ch (counts as hdc (UK htr)), \*sl st in the top of the hdc (UK htr) from the previous row, hdc (UK htr) into the sl st from the previous row, rep from \* across. Turn.

**Row 3:** 1 ch (does not count as st), sl st in first st, \*hdc (UK htr) in next st, sl st in next st, rep from \* across. Turn.

Rep Rows 2 and 3 until desired height. Fasten off and sew in ends.



# Granny Stripe

## Skill level

Beginner

## Multiples

3 + 2

## Stitches used

ch, sc (UK dc), dc (UK tr)

## Pattern note

For different effects with this stitch, you can change colours every one, two, three or more rows. If you wish to change colour for the next row, do so in the last yarn over of the last stitch.

## Colours

### Every row colour change:

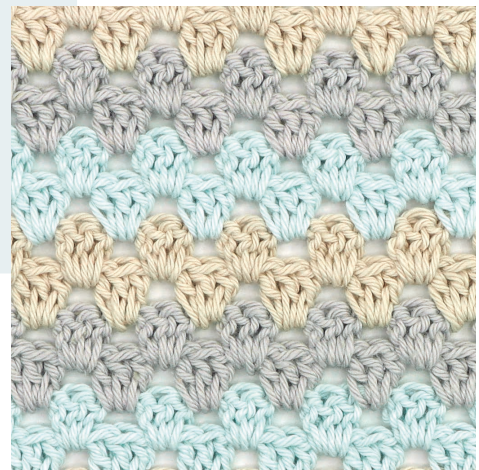
Vanilla cream (A), Sea Foam (B), Blush Pink (C)

### Every 2 rows colour change:

Stormy Grey (A), Vanilla Cream (B), Sea Foam (C)

### Every 3 rows colour change:

Blush Pink (A), Pistachio Green (B), Vanilla Cream (C)



## INSTRUCTIONS

**Row 1:** sc (UK dc) in second ch from hook (skipped ch does not count as st), sc (UK dc) in next ch and each ch across. Turn.

**Row 2:** 3 ch (counts as dc (UK tr) here and throughout), dc (UK tr) in same st as 3-ch, \*skip 2 sts, 3 dc (UK 3 tr) in next st, rep from \* until 3 sts rem, skip 2 sts, 2 dc (UK 2 tr) in last st. Turn.

**Row 3:** 3 ch, skip next st, \*3 dc (UK 3 tr) in sp between clusters from previous row, skip 3 sts, rep from \* until 3 sts rem, 3 dc (UK 3 tr) in sp between clusters, skip next st, dc (UK tr) in top of 3-ch. Turn.

**Row 4:** 3 ch, dc (UK tr) in sp between first and second st from previous row, \*skip 3 sts, 3 dc (UK 3 tr) in sp between clusters from previous row, rep from \* until 4 sts rem, skip 3 sts, dc (UK tr) in sp between last 2 sts, dc (UK tr) in top of 3-ch. Turn.

Rep Rows 3 and 4 until desired height.

Fasten off and sew in ends.

# Crossed Double Crochet

## Skill level

Intermediate

## Multiples

2 + 2

## Stitches used

ch, CDC (*UK CTR*) – see 'Special stitch' below,  
dc (*UK tr*), sc (*UK dc*)

## Special stitch

**CDC (*UK CTR*) = Crossed Double Crochet**  
**(*UK Crossed Treble Crochet*):** skip next st, dc (*UK tr*)  
into next st, dc (*UK tr*) into skipped st working over  
the previous dc (*UK tr*)

## Colour

Vanilla Cream



## INSTRUCTIONS

**Row 1:** skip 3 ch (skipped 3-ch counts as dc (*UK tr*)), [CDC (*UK CTR*) over next 2 ch] until 1 ch rem, dc (*UK tr*) in last ch. Turn.

**Row 2:** 1 ch (does not count as st here or throughout), sc (*UK dc*) in each st across. Turn.

**Row 3:** 3 ch (counts as dc (*UK tr*)), CDC (*UK CTR*) across until 1 st rem, dc (*UK tr*) in last st. Turn.

**Row 4:** 1 ch, sc (*UK dc*) in each st across. Turn.

Rep Rows 3 and 4 until desired height.

Fasten off and sew in ends.



# Triangle

## Skill level

Intermediate

## Multiples

2 + 1

## Stitches used

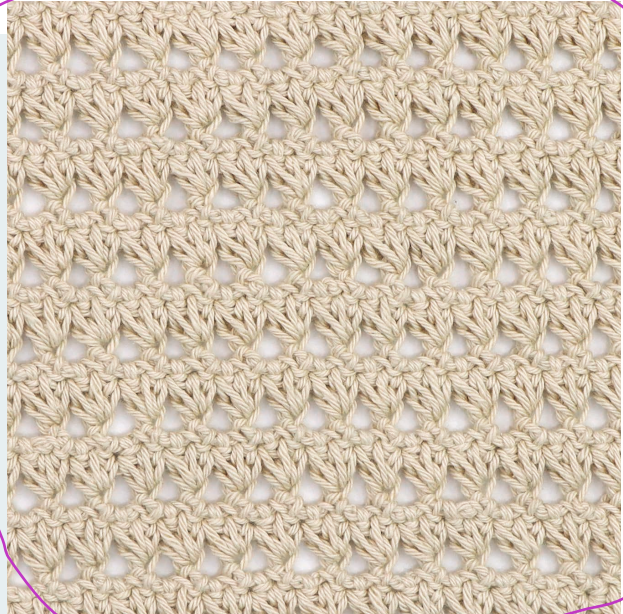
ch, sc (UK dc), TS – see 'Special stitch' below, hdc (UK htr)

## Special stitch

**TS = Triangle Stitch:** yo, insert hook into first st as directed, yo and pull through a loop (3 loops on hook), yo, insert hook into next st, yo and pull through a loop (5 loops on hook), yo, insert hook into next st, yo and pull through a loop (7 loops on hook), yo and pull through rem loops on the hook

## Colour

Vanilla Cream



## INSTRUCTIONS

**Row 1:** sc (UK dc) in second ch (skipped ch does not count as st), sc (UK dc) in next ch and each ch across. Turn.

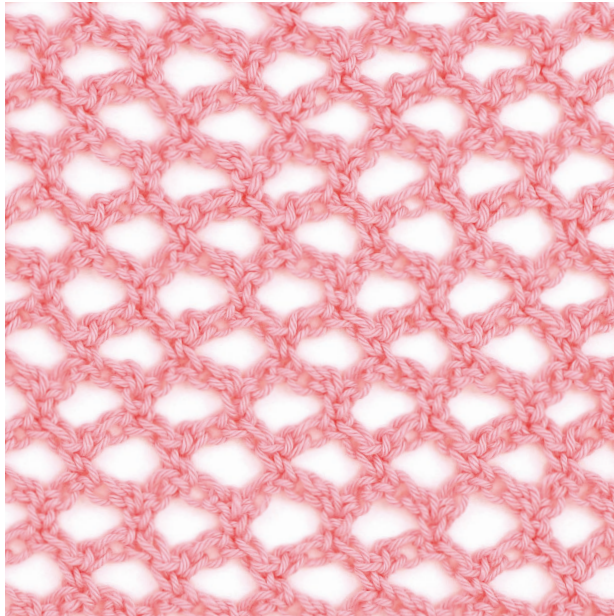
**Row 2:** 3 ch (counts as hdc (UK htr) and 1 ch), starting in first sc (UK dc) at base of 3-ch, \*TS, 2 ch, beginning in last worked st of previous TS st, rep from \* until 1 st rem, hdc (UK htr) in last st. Turn.

**Row 3:** 1 ch (does not count as st), sc (UK dc) in first st and ch sp, \*skip TS, work 2 sc (UK 2 dc) in ch sp, rep from \* until 1 ch sp rem, sc (UK dc) in ch sp, sc (UK dc) in second ch of 3-ch. Turn.

Rep Rows 2 and 3 until desired height.

Fasten off and sew in ends.

# Solomon's Knot



## Skill level

Advanced

## Multiples

4 + 2

## Stitches used

ch, sc (UK dc), SK – see 'Special stitch' below, tr (UK dtr)

## Special stitch

**SK = Solomon's Knot:** pull up a loop to around ½in (12mm) tall, 1 ch, insert hook between the first and second loop of the 3 loops below hook and complete a sc (UK dc) (known as a closing sc (UK closing dc))

## Colour

Blush Pink

## INSTRUCTIONS

**Row 1:** sc (UK dc) in second ch from hook (skipped ch does not count as a st), \*2 SK, skip 3 ch, sc (UK dc) in next ch, rep from \* across. Turn.

**Row 2:** 5 ch (skipped 4-ch counts as st here and throughout), SK, skip first sc (UK dc) and SK, \*sc (UK dc) in next closing sc (UK closing dc), 2 SK, skip [SK, sc (UK dc), SK], rep from \* until 1 closing sc (UK closing dc) rem, sc (UK dc) in closing sc (UK closing dc), SK, tr (UK dtr) in last sc (UK dc). Turn.

**Row 3:** 1 ch, sc (UK dc) in first closing sc (UK closing dc), \*2 SK, skip [SK, sc (UK dc), SK], sc (UK dc) in next closing sc (UK closing dc), rep from \* across working final sc (UK dc) in top of 5-ch. Turn.

Rep Rows 2 and 3 until desired height.

**Final Row:** 5 ch, \*sc (UK dc) in closing sc (UK closing dc), 3 ch, rep from \* across, 2 ch (so that you are ending with a 5-ch), sl st into starting 1-ch of previous row.

Fasten off and sew in ends.



# Lace Cluster

## Skill level

Beginner

## Multiples

6 + 5

## Stitches used

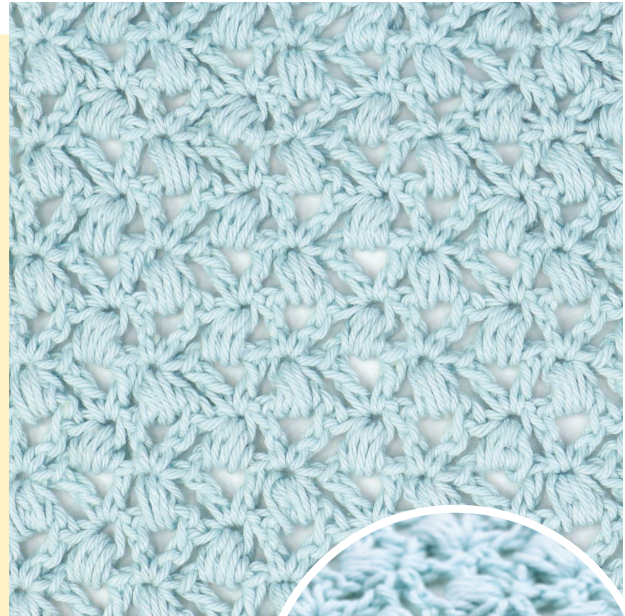
ch, dc (*UK tr*), hdccl (*UK htrcl*) – see 'Special stitch' below

## Special stitch

**hdccl (*UK htrcl*) = Half Double Crochet Cluster (*UK Half Treble Cluster*):** [yo, insert hook into st, yo, pull through] four times into next st, yo, pull through all loops on the hook, 1 ch to secure cluster

## Colour

Sea Foam



## INSTRUCTIONS

**Row 1:** [dc (*UK tr*), 2 ch, dc (*UK tr*)] in fourth ch from hook (skipped 3-ch counts as dc (*UK tr*)), skip 2 ch, \*hdccl (*UK htrcl*), skip 2 ch, [dc (*UK tr*), 2 ch, dc (*UK tr*)] in next ch, rep from \* until 1 ch rem, dc (*UK tr*) in last ch. Turn.

**Row 2:** 3 ch (counts as dc (*UK tr*) here and throughout), \*hdccl (*UK htrcl*) into the ch sp from previous row, [dc (*UK tr*), 2 ch, dc (*UK tr*)] into top of next hdccl (*UK htrcl*) from previous row, rep from \* until 1 ch sp rem, hdccl (*UK htrcl*) in last ch sp, dc (*UK tr*) in top of 3-ch. Turn.

**Row 3:** 3 ch, \*[dc (*UK tr*), 2 ch, dc (*UK tr*)] into top of next hdccl (*UK htrcl*) from previous row, hdccl (*UK htrcl*) into next ch sp from previous row, rep from \* until 1 hdccl (*UK htrcl*) rem, [dc (*UK tr*), 2 ch, dc (*UK tr*)] in last hdccl (*UK htrcl*), dc (*UK tr*) in top of 3-ch. Turn.

Rep Rows 2 and 3 until desired height.

Fasten off and sew in ends.

# Basketweave



## Skill level

Intermediate

## Multiples

8 + 7

## Stitches used

ch, dc (*UK tr*), hdc (*UK htr*)

## Pattern note

Refer to pages 172 and 173 for more information on BP and FP stitches.

## Colour

Stormy Grey

## INSTRUCTIONS

**Row 1:** dc (*UK tr*) into third ch from hook (skipped 2-ch counts as a st), dc (*UK tr*) in each ch across. Turn.

**Row 2:** 2 ch (counts as hdc (*UK htr*) here and throughout), \*FPdc (*UK FPtr*) around next 4 sts, BPdc (*UK BPtr*) around next 4 sts, rep from \* until 5 sts rem, FPdc (*UK FPtr*) around next 4 sts, hdc (*UK htr*) in top of 2-ch. Turn.

**Row 3:** 2 ch, \*BPdc (*UK BPtr*) around next 4 sts, FPdc (*UK FPtr*) around next 4 sts, rep from \* until 5 sts rem, BPdc (*UK BPtr*) around next 4 sts, hdc (*UK htr*) in top of 2-ch. Turn.

**Row 4:** 2 ch, \*BPdc (*UK BPtr*) around next 4 sts, FPdc (*UK FPtr*) around next 4 sts, rep from \* until 5 sts rem, BPdc (*UK BPtr*) around next 4 sts, hdc (*UK htr*) in top of 2-ch. Turn.

**Row 5:** 2 ch, \*FPdc (*UK FPtr*) around next 4 sts, BPdc (*UK BPtr*) around next 4 sts, rep from \* until 5 sts rem, FPdc (*UK FPtr*) around next 4 sts, hdc (*UK htr*) in top of 2-ch. Turn.

Rep Rows 2–5 until desired height.

Fasten off and sew in ends.



# Double Waffle



## Skill level

Intermediate

## Multiples

5 + 2

## Stitches used

ch, dc (*UK tr*)

## Pattern note

Refer to page 173 for more information on FP stitches.

## Colour

Sea Foam

## INSTRUCTIONS

**Row 1 (RS):** dc (*UK tr*) in third ch from hook (skipped 2-ch does not count as st), dc (*UK tr*) in each ch across. Turn.

**Row 2 (WS):** 2 ch (does not count as st here or throughout), dc (*UK tr*) in first st, FPdc (*UK FPtr*) around next 3 sts, \*dc (*UK tr*) in next 2 sts, FPdc (*UK FPtr*) around next 3 sts, rep from \* until 1 st rem, dc (*UK tr*) in last st. Turn.

**Row 3:** 2 ch, dc (*UK tr*) in first st and in next 3 sts, \*FPdc (*UK FPtr*) around next 2 sts, dc (*UK tr*) in next 3 sts, rep from \* across until 1 st rem, dc (*UK tr*) in last st. Turn.

Rep Rows 2 and 3 until desired height.

Fasten off and sew in ends.

# Bobble

## Skill level

Intermediate

## Multiples

2 + 2

## Stitches used

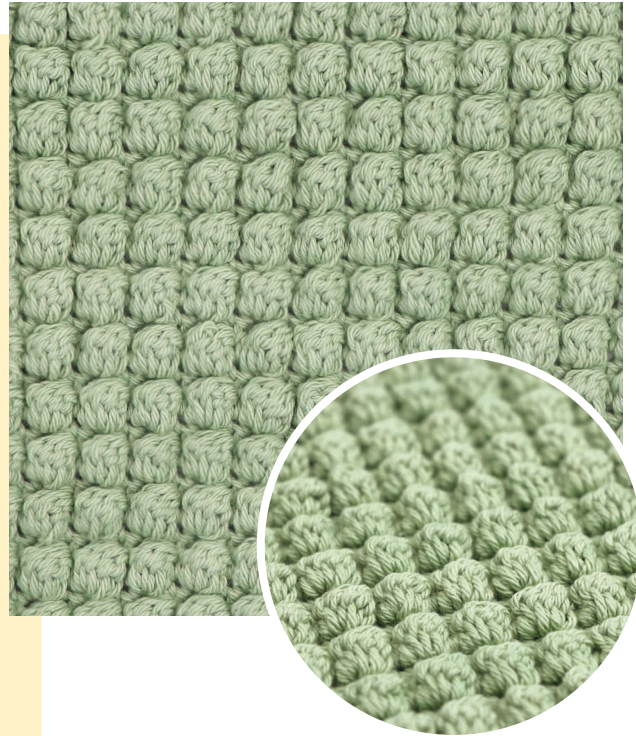
ch, sc (*UK dc*), Bobble – see 'Special stitch' below

## Special stitch

**Bobble = Bobble Stitch:** yo, insert hook into next st, yo and pull up a loop, yo and pull through 2 loops on the hook (2 loops on hook), [yo, insert hook into same st, yo and pull up a loop, yo and pull through 2 loops] four times (6 loops on hook), yo and pull through rem 6 loops on hook, 1 ch to secure

## Colour

Pistachio



## INSTRUCTIONS

**Row 1 (RS):** sc (*UK dc*) in second ch from hook (skipped ch does not count as st), sc (*UK dc*) in each ch across. Turn.

**Row 2 (WS):** 1 ch (does not count as st here or throughout), \*Bobble in next st, sc (*UK dc*) in next st, rep from \* until 1 st rem, Bobble in last st. Turn.

**Row 3:** 1 ch, sc (*UK dc*) in each st across. Turn.

Rep Rows 2 and 3 until desired height.

Fasten off and sew in ends.



# Arrow

## Skill level

Advanced

## Multiples

4 + 4

## Stitches used

ch, sc (UK dc), dc (UK tr), FAS – see 'Special stitches' below, AS – see 'Special stitches' below, BAS – see 'Special stitches' below

## Special stitches

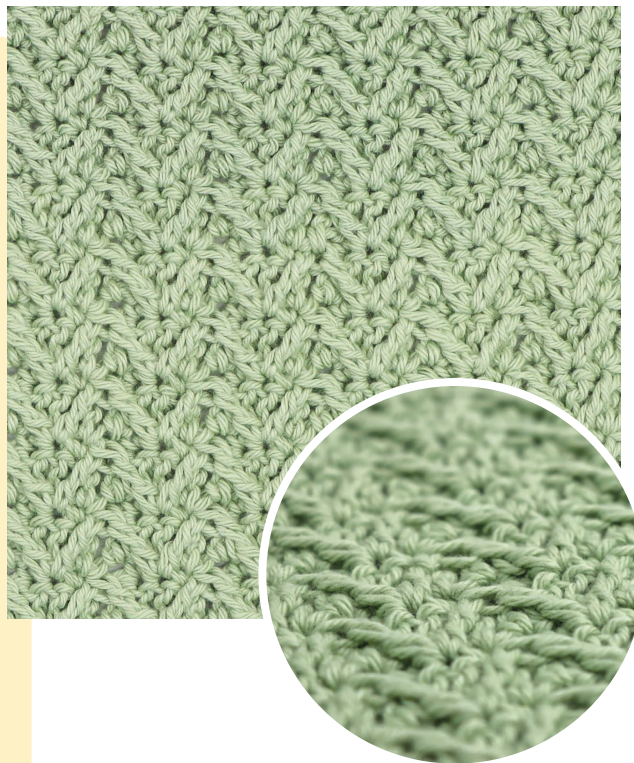
**AS = Arrow Stitch:** yo twice, insert hook into st beneath previous ch sp two rows down from front to back, yo and pull through (4 loops on hook), yo and pull through 2 loops (3 loops on hook), yo and pull through 2 loops (2 loops on hook), yo twice, insert hook under next 1-ch sp two rows down from front to back, yo over and pull through (5 loops on hook), yo over and pull through 2 loops (4 loops on hook), yo and pull through 2 loops (3 loops on hook), yo and pull through rem 3 loops on the hook

**FAS = Forward Arrow Stitch:** yo twice, insert hook into st beneath next ch sp two rows down from front to back, yo and pull through (4 loops on hook), yo over and pull through 2 loops (3 loops on hook), yo and pull through 2 loops (2 loops on hook), yo and pull through rem 2 loops on the hook

**BAS = Backward Arrow Stitch:** yo over twice, insert hook into st beneath previous ch sp two rows down from front to back, yo and pull through (4 loops on hook), yo over and pull through 2 loops (3 loops on hook), yo over and pull through 2 loops (2 loops on hook), yo and pull through rem 2 loops on the hook

## Colour

Pistachio Green



## INSTRUCTIONS

**Row 1:** sc (UK dc) in second ch from hook (skipped ch does not count as st), sc (UK dc) in next 2 ch, \*1 ch, skip next ch, sc (UK dc) in next 3 ch, rep from \* across. Turn.

**Row 2:** 3 ch (counts as dc (UK tr)), dc (UK tr) in next 2 sts, \*dc (UK tr) in ch sp, dc (UK tr) in next 3 sts, rep from \* across. Turn.

**Row 3:** 1 ch (does not count as a st), sc (UK dc) in first st, FAS, skip 1 st (the st sitting behind FAS just worked), sc (UK dc) in next st, 1 ch, skip 1 st, \*sc (UK dc) in next st, AS, skip 1 st (the st sitting behind AS just worked), sc (UK dc) in next rem, sc (UK dc) in next st, rep from \* until 3 sts rem, sc (UK dc) in next st, BAS, skip 1 st (the st sitting behind BAS just worked), sc (UK dc) in top of 3-ch. Turn.

Rep Rows 2 and 3 until desired height.

Fasten off and sew in ends.

**Round 3:** 3 ch, 2 dc (UK 2 tr) in 1-ch sp, 1 ch, [3 dc (UK 3 tr), 3 ch, 3 dc (UK 3 tr)] in 3-ch sp, \*1 ch, [3 dc (UK 3 tr) in next ch-sp, 1 ch] to 3-ch sp, [3 dc (UK 3 tr), 3 ch, 3 dc (UK 3 tr)] in 3-ch sp, rep from \* to end, join with sl st in top of 3-ch. Turn.

(20 clusters, 4 3-ch sps, 16 1-ch sps.)

**Round 4:** 3 ch, 2 dc (UK 2 tr) in 1-ch sp, [1 ch, 3 dc (UK 3 tr)] to corner 3-ch sp, 3 ch, 3 dc (UK 3 tr) in same ch sp as previous st, \*[1 ch, 3 dc (UK 3 tr) in next 1-ch sp, 1 ch] to 3-ch sp, [3 dc (UK 3 tr), 3 ch, 3 dc (UK 3 tr)] in 3-ch sp, 1 ch, rep from \* two more times, [3 dc (UK 3 tr) in next 1-ch sp, 1 ch] to end, join with sl st in top of 3-ch. Turn.

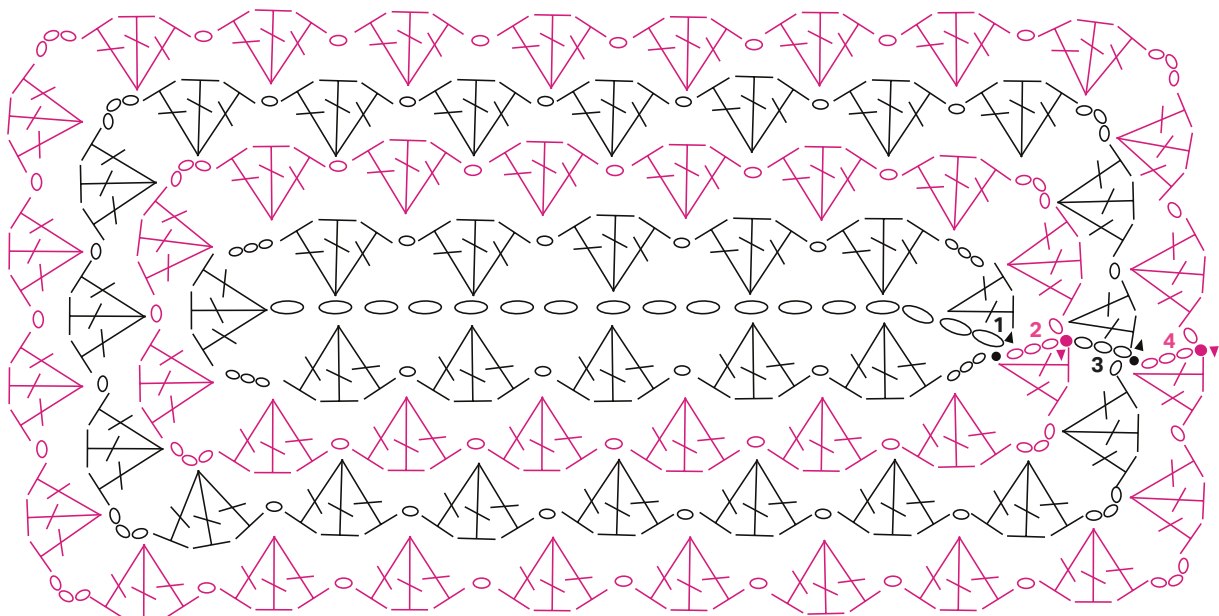
(24 clusters, 4 3-ch sps, 20 1-ch sps.)

Rep Round 4 until desired size.

Fasten off and sew in ends.

### Symbol key

- ◀ direction to work
- chain (ch)
- slip stitch (sl st)
- ⌋ double crochet/  
UK treble crochet  
(dc/UK tr)



# Granny Half Hexagon

## – HORIZONTAL

### Skill level

Intermediate

### Stitches used

ch, sl st, dc (UK tr)

### Pattern note

'Granny set' refers to 3 dc (UK 3 tr) worked into one sp.

### Colour

Blush Pink

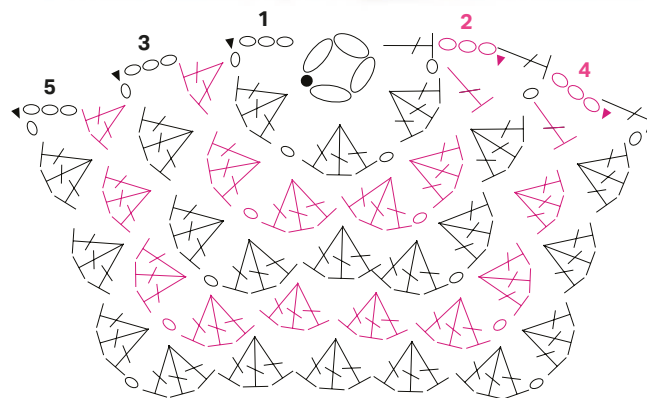
### Symbol key

◀ direction to work

○ chain (ch)

● slip stitch (sl st)

⌘ double crochet/UK treble crochet (dc/UK tr)



## INSTRUCTIONS

4 ch, sl st into fourth ch from hook to form a ring.

**Row 1:** 4 ch (counts as dc (UK tr) and 1 ch here and throughout), into ring work [3 dc (UK 3 tr), 1 ch] three times, dc (UK tr). Turn.

(3 granny sets, 2 dc (UK 2 tr), 4 ch sps.)

**Row 2:** 3 ch (counts as dc (UK tr) here and throughout), dc (UK tr) in ch sp, \*[3 dc (UK 3 tr), 1 ch, 3 dc (UK 3 tr)] in next ch sp, rep from \* once more, 2 dc (UK 2 tr) in next ch sp. Turn.

(4 granny sets, 4 dc (UK 3 tr), 2 ch sps.)

**Row 3:** 4 ch, 3 dc (UK 3 tr) in next sp between granny sets, \*[3 dc (UK 3 tr), 1 ch, 3 dc (UK 3 tr)] in next ch sp, 3 dc (UK 3 tr) in next sp between granny sets, rep from \* once more, 1 ch, skip next st, dc (UK tr) in top of 3-ch. Turn.

(7 granny sets, 2 dc (UK 2 tr), 4 ch sps.)

**Row 4:** 3 ch, dc (UK tr) in ch sp. \*[3 dc (UK 3 tr) in next space between granny sets] to ch sp, [3 dc (UK 3 tr), 1 ch, 3 dc (UK 3 tr)] in next ch sp, rep from \* once more, [3 dc (UK 3 tr) in next sp between granny sets] to ch sp, 2 dc (UK 2 tr) in ch sp. Turn.

(8 granny sets, 4 dc (UK 4 tr), 2 ch sps.)

**Row 5:** 4 ch, \*[3 dc (UK 3 tr) in next sp between granny sets] to ch sp, [3 dc (UK 3 tr), 1 ch, 3 dc (UK 3 tr)] in next ch sp, rep from \* once more, [3 dc (UK 3 tr) in next sp between granny sets] to last 2 dc (UK 2 tr), 1 ch, skip next st, dc (UK tr) in top of 3-ch. Turn.

(11 granny sets, 4 dc (UK 4 tr), 2 ch-sps.)

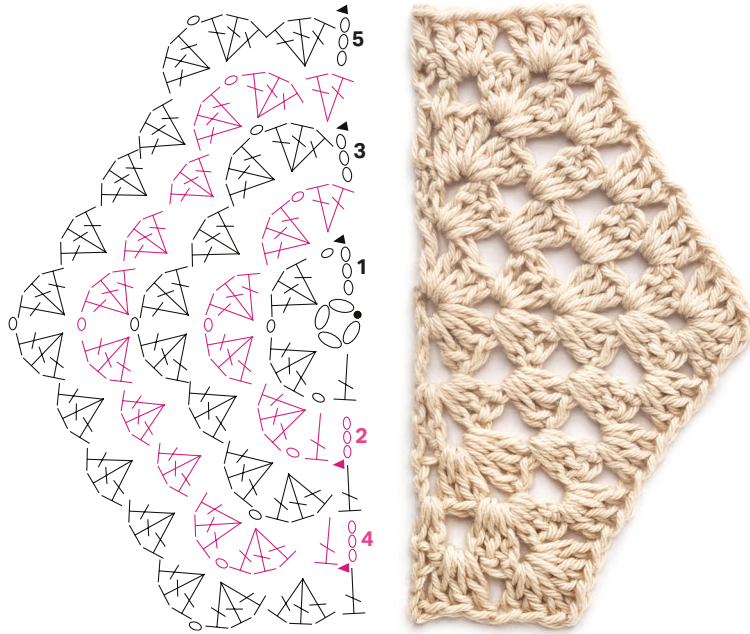
Rep **Rows 4 and 5** until desired size.

Fasten off and sew in ends.



# Granny Half Hexagon

## – VERTICAL



### Skill level

Intermediate

### Stitches used

ch, sl st, dc (UK tr)

### Pattern note

'Granny set' refers to 3 dc (UK 3 tr) worked into one sp.

### Colour

Vanilla Cream

### Symbol key

- ◀ direction to work
- chain (ch)
- slip stitch (sl st)
- ⌈ double crochet/  
UK treble crochet  
(dc/UK tr)

## INSTRUCTIONS

4 ch, sl st into fourth ch from hook to form a ring.

**Row 1:** 4 ch (counts as dc (UK tr) and 1 ch), into the ring work [3 dc (UK 3 tr), 1 ch] twice, dc (UK tr). Turn.

(2 granny sets, 2 dc (UK 2 tr), 3 ch sps.)

**Row 2:** 3 ch (counts as dc (UK tr) here and throughout), [dc (UK tr), 1 ch, 3 dc (UK 3 tr)] in ch sp, [3 dc (UK 3 tr), 1 ch, 3 dc (UK 3 tr)] in next ch sp, [3 dc (UK 3 tr), 1 ch, 2 dc (UK 2 tr)] in next ch sp. Turn.

(4 granny sets, 4 dc (UK 4 tr), 3 ch sps.)

**Row 3:** 3 ch, \*[3 dc (UK 3 tr), 1 ch, 3 dc (UK 3 tr)] in next ch sp, 3 dc (UK 3 tr) in next sp between granny sets, rep from \* once more, [3 dc (UK 3 tr), 1 ch, 3 dc (UK 3 tr)] in next ch sp, skip next st, dc (UK tr) in top of 3-ch. Turn.

(8 granny sets, 2 dc (UK 2 tr), 3 ch sps.)

**Row 4:** 3 ch, dc (UK tr) in sp between sts at base of 3-ch, \*[3 dc (UK 3 tr), 1 ch, 3 dc (UK 3 tr)] in next ch sp, [3 dc (UK tr) in next sp between granny sets] twice, rep from \* once more, [3 dc (UK 3 tr), 1 ch, 3 dc (UK 3 tr)] in next sp between granny sets, skip 3 sts, 2 dc (UK 2 tr) in top of 3-ch. Turn.

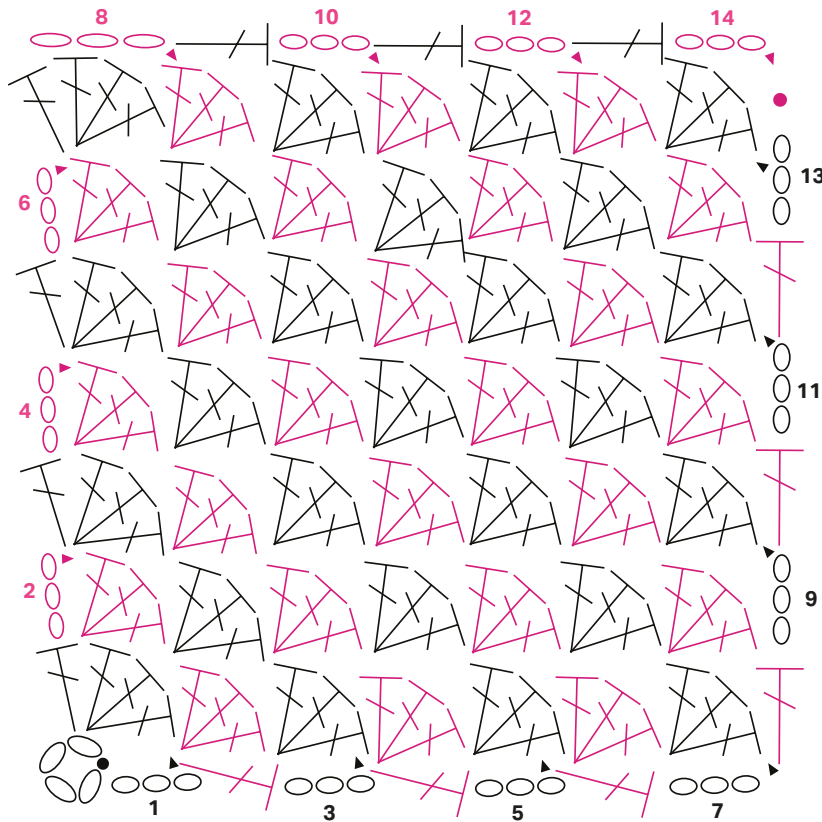
(10 granny sets, 4 dc (UK 3 tr), 3 ch sps.)

**Row 5:** 3 ch, \*[3 dc (UK 3 tr) in next sp between granny sets] to next ch sp, [3 dc (UK 3 tr), 1 ch, 3 dc (UK 3 tr)] in next ch sp, rep from \* twice more, [3 dc (UK 3 tr) in next sp between granny sets] to last dc (UK tr), dc (UK tr) in top of 3-ch. Turn.

(14 granny sets, 2 dc (UK 4 tr), 3 ch sps.)

Rep **Rows** 4 and 5 until desired size.

Fasten off and sew in ends.



### Symbol key

- ◀ direction to work
- chain (ch)
- slip stitch (sl st)
- ┆ double crochet/  
UK treble crochet  
(dc/UK tr)

#### DECREASE ROWS

**Row 8:** 3 ch, [skip 3 sts, 3 dc (UK 3 tr) in sp between clusters] to last cluster, dc (UK tr) in sp between last 2 sts. Turn.

(6 clusters.)

**Row 9:** 3 ch, [skip 3 sts, 3 dc (UK 3 tr) in sp between clusters] to last cluster, dc (UK tr) in top of 3-ch. Turn.

(5 clusters.)

**Rows 10–12:** rep Row 9.

(2 clusters.)

**Note:** If your square is larger, repeat Row 9 until two clusters rem.

**Row 13:** 3 ch, skip 3 sts, 3 dc (3 tr) in sp between clusters, dc (UK tr) into top of 3-ch. Turn.

(1 cluster.)

**Row 14:** 3 ch, skip 3 sts, sl st into top of 3-ch. Fasten off and sew in ends.

# Bobble Circle Square

## Skill level

Intermediate

## Stitches used

ch, sl st, sc (UK *dc*), Beg-Bob – see 'Special stitches' below, Bobble – see 'Special stitches' below, tr (UK *dtr*), dc (UK *tr*), hdc (UK *htr*)

## Special stitches

### Beg-Bob = Beginning Bobble:

3 ch, [yo, insert hook in st at base of 3-ch, yo, pull through, yo, pull through 2 loops on hook] three times (5 loops on hook), yo and pull through rem loops on the hook, 1 ch to secure. The bobble will 'pop' out away from you

### BobSt = Bobble variation:

yo, insert hook into next st, yo and pull through (3 loops on hook), yo, pull through 2 loops (2 loops on hook), [yo, insert hook into same st, yo, pull through, yo, pull through 2 loops on hook] three times (5 loops on hook), yo, pull through rem loops on the hook, 1 ch to secure. The bobble will 'pop' out away from you

## Colours

Stormy Grey (A), Vanilla Cream (B)



## INSTRUCTIONS

Using yarn A, make a magic ring/adjustable loop.

**Round 1:** 1 ch, into the ring work 8 sc (UK *8 dc*), sl st in first sc (UK *dc*) of round to join.

(8 sts.)

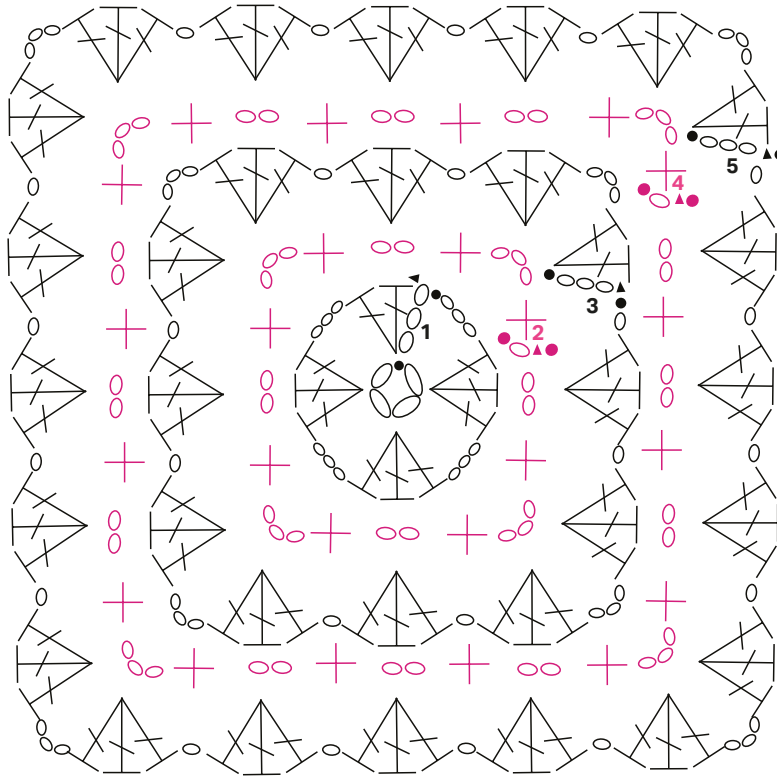
**Round 2:** work a Beg-Bob in first st, [1 ch, BobSt in next st] around, 1 ch, sl st into top of first bobble to join.

(8 bobbles, 8 1-ch sps.)

**Round 3:** work a Beg-Bob in first st, 1 ch, BobSt in next 1-ch sp between bobbles, \*1 ch, BobSt in top of next bobble, 1 ch, BobSt in next 1-ch sp, rep from \* around, 1 ch, sl st into top of first bobble to join.

(16 bobbles, 16 1-ch sps.)





### Symbol key

- ◀ direction to work
- chain (ch)
- slip stitch (sl st)
- +
- single crochet/  
UK double crochet  
(sc/UK dc)
- ⌈
- double crochet/  
UK treble crochet  
(dc/UK tr)

Join yarn B into any corner 3-ch sp with a sl st.

**Round 4:** 1 ch, [sc (UK dc), 3 ch, sc (UK dc)] in same sp, \*2 ch, [sc (UK dc) in next ch sp, 2 ch] to corner 3-ch sp, [sc (UK dc), 3 ch, sc (UK dc)] in 3-ch sp, rep from \* twice more, 2 ch, [sc (UK dc) in next ch sp, 2 ch] to end, join with sl st to top of beginning sc (UK dc). Fasten off.

(16 sc (UK 16 dc), 12 2-ch sps, 4 3-ch sps.)

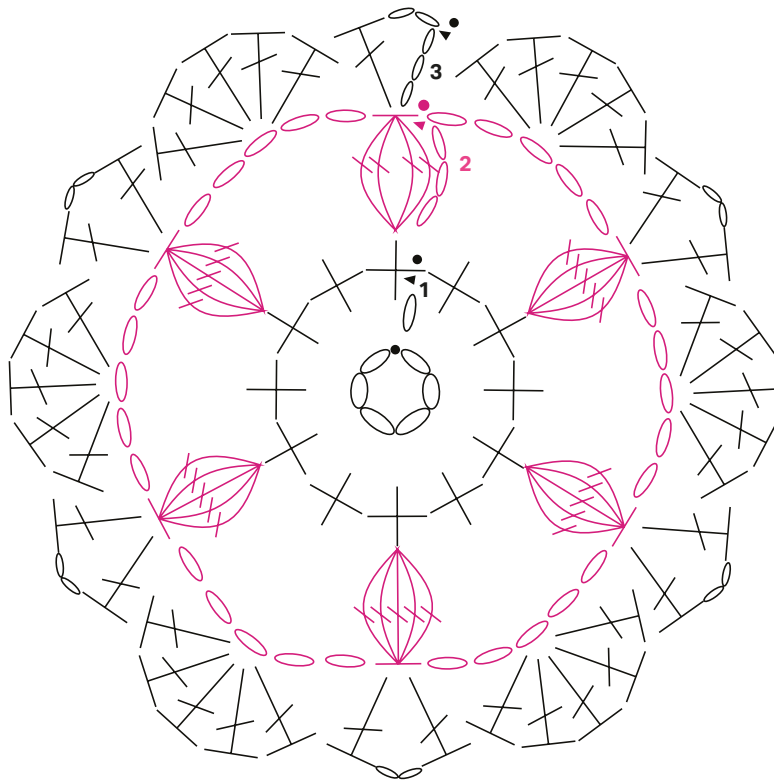
Join yarn A into any corner 3-ch sp with sl st.

**Round 5:** 3 ch, [2 dc (UK 2 tr), 3 ch, 3 dc (UK 3 tr)] in same sp, \*1 ch, [3 dc (UK 3 tr) in next ch sp, 1 ch] to corner 3-ch sp, [3 dc (UK 3 tr), 3 ch, 3 dc (UK 3 tr)] in corner 3-ch sp, rep from \* twice more, 1 ch, [3 dc (UK 3 tr) in next ch sp, 1 ch] to end, join with sl st to top of 3-ch. Fasten off.

(60 dc (UK 60 tr), 16 1-ch sps, 4 3-ch sps.)

Rep Rounds 4 and 5 until desired size, changing colour every round.

Fasten off and sew in ends.



### Symbol key

- ◀ direction to work
- chain (ch)
- slip stitch (sl st)
- single crochet/  
UK double crochet  
(sc/UK dc)
- double crochet/  
UK treble crochet  
(dc/UK tr)
- BobSt

## INSTRUCTIONS

With yarn A, 6 ch, sl st in first ch to form a ring.

**Round 1:** 1 ch (does not count as st), work 12 sc (UK 12 dc) in circle, sl st in first sc (UK dc) to join.

(12 sts.)

**Round 2:** work a Beg-Bob in first st, \*5 ch, skip next sc (UK dc), BobSt in next sc (UK dc), rep from \* four times, 5 ch, sl st into top of Beg-Bob. Fasten off.

(6 bobbles, 6 5-ch sps.)

Join yarn B in top of any bobble from Round 2.

**Round 3:** 5 ch (counts as dc (UK tr) and 2 ch), dc (UK tr) in same st, \*5 dc (UK 5 tr) in next ch sp, [dc (UK tr), 2 ch, dc (UK tr)] in top of next bobble, rep from \* four times, 5 dc (UK 5 tr) in last ch sp, sl st into third of 5-ch.

(42 sts, 6 2-ch sps.)

Fasten off and sew in ends.

# Solid Mitred Granny Square

## Skill level

Intermediate

## Stitches used

ch, sl st, dc (UK tr)

## Colours

Pistachio Green (A),  
Vanilla Cream (B),  
Stormy Grey (C)



## INSTRUCTIONS

With yarn A, either make a magic ring/adjustable loop (for a closed centre) or work 3 ch, sl st into third ch from hook to form a ring (for an open centre).

**Round 1 (RS):** 3 ch (counts as dc (UK tr) here and throughout), into ring work 2 dc (UK 2 tr), 2 ch, [3 dc (UK 3 tr), 2 ch] three times, join with sl st into top of 3-ch. Turn.

(12 dc (UK 12 tr), 4 ch sps.)

**Round 2 (WS):** 3 ch, [2 dc (UK 2 tr), 2 ch, 2 dc (UK 2 tr)] in corner 2-ch sp, \*dc (UK tr) in next 3 sts, [2 dc (UK 2 tr), 2 ch, 2 dc (UK 2 tr)] in corner 2-ch sp, rep from \* twice more, dc (UK tr) in next 2 sts, join with sl st into top of 3-ch. Fasten off. Turn.

(28 dc (UK 28 tr), 4 ch sps.)

Join yarn B in any corner 2-ch sp with sl st.

**Mitre Row 1 (RS):** (starting point indicated by '3' on chart) 3 ch, dc (UK tr) into same ch sp, dc (UK tr) in each st to corner ch sp, [2 dc (UK 2 tr), 2 ch, 2 dc (UK 2 tr)] in ch sp, dc (UK tr) in each st to corner ch sp, 2 dc (UK 2 tr) in ch sp, leave rem sts unworked. Turn.

(22 dc (UK 22 tr), 1 ch sp.)

**Mitre Row 2 (WS):** (starting point indicated by '4' on chart) 3 ch, dc (UK tr) in each st to corner ch sp, [2 dc (UK 2 tr), 2 ch, 2 dc (UK 2 tr)] in ch sp, dc (UK tr) in each st to end. Fasten off. Turn.

(26 dc (UK 26 tr), 1 ch sp.)



# Camel



## Skill level

Intermediate

## Multiples

N/A

## Stitches used

ch, sl st, hdc (UK htr)

## Pattern notes

- The instructions are written with the assumption that you have completed your project, and you're ready to add your border.
- If you need to remind yourself of where the third loop is in your half double crochet (UK half treble crochet) stitch, see page 34.

## Colours

Blush Pink (A), Vanilla Cream (B)

## INSTRUCTIONS

With RS facing, join yarn A in any corner sp with sl st.

**Round 1:** 2 ch (does not count as st here or throughout), hdc (UK htr) in corner sp, hdc (UK htr) in each st across to the next corner sp, \*[hdc (UK htr), 2 ch, hdc (UK htr)] in corner sp, hdc (UK htr) in each st to next corner sp, rep from \* to beginning corner, hdc (UK htr) in first corner sp, 2 ch, join with sl st into top of first hdc (UK htr). **Do not turn.**

**Round 2:** 2 ch, hdc (UK htr) in corner ch sp (the 2-ch worked at end of previous round), hdc (UK htr) in third loop of each st across to next corner ch sp, \*[hdc (UK htr), 2 ch, hdc (UK htr)] in corner ch sp, hdc (UK htr) in third loop of each st to next corner ch sp, rep from \* to beginning corner, hdc (UK htr) in first corner ch sp, 2 ch, join with sl st to first hdc (UK htr). **Do not turn.**  
Rep Round 2 until desired border width.  
Fasten off and sew in ends.

# Pompom



## INSTRUCTIONS

**Note:** if you need to adjust your stitch count so the edge of your work is a multiple of 3, you can sc2tog (*UK dc2tog*) – i.e. work 2 sts together – in one stitch at any point around the work in Round 1.

**Round 1:** with RS facing you and yarn A, work sc (*UK dc*) evenly around the whole of your work, working 3 sts in each corner sp, join with sl st into first st (*UK dc*). Do not turn.

With RS facing and in any corner, join yarn B in the middle sc (*UK dc*) of the three corners sts with sl st.

**Round 2:** 1 ch (does not count as st here or throughout), \*2 sc (*UK 2 dc*) in corner st, 2 ch, skip 2 sts, [sc (*UK dc*) in next st, 2 ch, skip 2 sts] to corner st, rep from \* around, join with sl st into first st. Turn.

**Round 3:** sl st into ch sp, \*6 ch, PPst in third ch from hook, 3 ch, sc (*UK dc*) in next ch sp, rep from \* around, omitting the final sc (*UK dc*) on last rep, sl st into st at base of 6-ch to join.

Fasten off and sew in ends.

### Skill level

Intermediate

### Multiples

3

### Stitches used

ch, sc (*UK dc*), sl st, PPst – see 'Special stitches' below

### Special stitch

**PPst = Pompom Stitch:** yo, insert hook into indicated st, yo and pull up a loop, yo and pull through 2 loops, [yo, insert hook into same st, yo and pull up a loop, yo and pull through 2 loops] twice (4 loops on hook), yo and pull through rem 4 loops on the hook. First cluster made. Make 3 ch, yo, insert into bottom of 3-ch at top of prev cluster, yo and pull up a loop, yo and pull through 2 loops, [yo, insert hook into same st, yo and pull up a loop, yo and pull through 2 loops] twice (4 loops on hook), yo and pull through rem 4 loops on the hook. Second cluster made. Fold second cluster down over the first then sl st into same ch first cluster st was made in, 1 ch to secure.

### Pattern note

The instructions are written with the assumption that you have completed your project, and you're ready to add your border.

### Colours

Vanilla Cream (A), Blush Pink (B)

## Assembly

### Joining Rectangles

**Note:** Fasten off yarn at the end of each column and row.

Referring to the layout diagram (**Fig. A**), you will be joining the rectangles in columns first (**Fig. B**) then in rows (**Fig. C**) – see the diagrams below.

Place the first two rectangles ('C' and 'S') WS together. Using a 5mm (US H-8) hook and yarn F, and working through both layers, sl st in first ch sp to join and then sl st into BLO of front rectangle and FLO of back rectangle (the two loops closest to each other) across to ch sp, sl st in ch sp.

Place the next rectangle ('F') over the 'S' rectangle, WS together, then rep the above process.

Rep the process with the remaining rectangles until you have made five columns of five rectangles.

Now, begin joining your rows. Sl st in the ch sp of first two rectangles, then sl st into BLO of front rectangle and FLO of back rectangle (the two loops closest to each other) across to ch sp. Sl st in ch sp then work over join made from joining columns and continue to the end.

### Final Border

**Note:** For Round 1 of the final border, the corner ch sps where the rectangles have been joined will count as a st. This will leave you with 4 corner ch sps.

Using a 4mm (G-6) hook and with RS facing, join yarn A with a sl st to top-right ch sp.

**Round 1:** 1 ch (does not count as st here or throughout), hdc (UK htr) in ch sp, hdc (UK htr) in each st to next corner ch sp, \*[hdc (UK htr), 2 ch, hdc (UK htr)] in ch sp, hdc (UK htr) in each st to next corner ch sp, rep from \* twice more, [hdc (UK htr), 2 ch] in ch sp, join with sl st into first st.

(4 ch sps.)

**Round 2:** 1 ch, hdc (UK htr), \*hdc (UK htr) in each st to next ch sp, [hdc (UK htr), 2 ch, hdc (UK htr)] in ch sp, rep from \* three more times, join with sl st into first st.

(4 ch sps.)

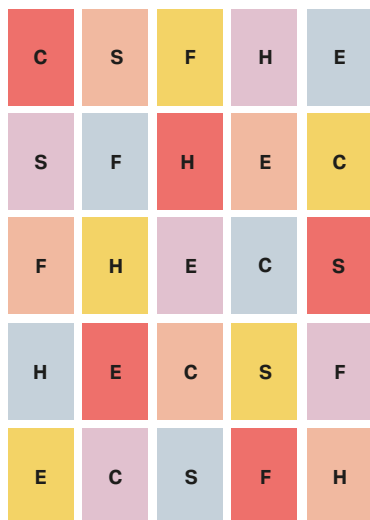
**Round 3:** 1 ch, \*BLOsc (UK BLOdc) in each st to ch sp, [sc (UK dc), 1 ch, sc (UK dc)] in ch sp, rep from \* three more times, BLOsc (UK BLOdc) in last st, join with sl st into first st.

(4 ch sps.)

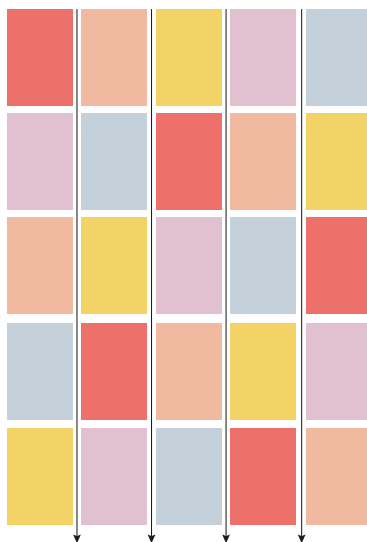
Fasten off and sew in ends.

**Fig. A: Layout diagram**

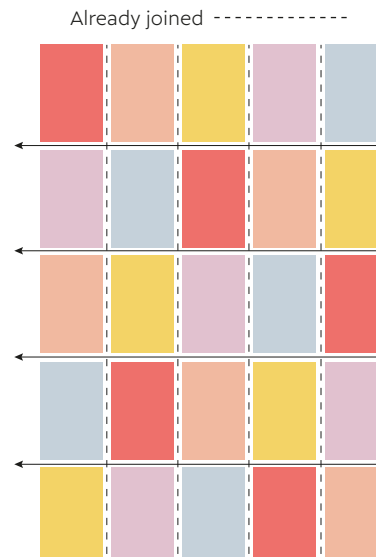
C = Cluster  
E = Even Moss  
F = Floret  
H = Herringbone  
S = Suzette



**Fig. B: Joining in columns**



**Fig. C: Joining in rows**





First published in 2025

Search Press Limited  
Wellwood, North Farm Road  
Tunbridge Wells, Kent  
TN2 3DR, United Kingdom

Text, charts and diagrams  
copyright © Sarah-Jayne Fragola, 2025

Crochet charts on pages 110–151 by Emily Reider

### Photographs

Photographs on pages 110–151 by Mark Davison.  
[www.markdavison.com](http://www.markdavison.com)

All remaining photographs are by Nicola White.  
[www.bunnyandblossomphotography.com](http://www.bunnyandblossomphotography.com)

Photography and design copyright  
© Search Press Ltd., 2025

All rights reserved. No part of this book, text, photographs or illustrations may be reproduced or transmitted in any form or by any means by print, photoprint, microfilm, microfiche, photocopier, internet, video, or in any way known or as yet unknown, or stored in a retrieval system, or used as part of a dataset for the purposes of machine learning, without written permission obtained beforehand from Search Press. Printed in China.

ISBN: 978-1-80092-219-8  
ebook ISBN: 978-1-80093-201-2

The Publishers and author can accept no responsibility for any consequences arising from the information, advice or instructions given in this publication. Readers are permitted to reproduce any of the patterns in this book for their personal use, or for the purposes of selling for charity, free of charge and without the prior permission of the Publishers. Any use of the patterns for commercial purposes or for machine learning is not permitted without the prior permission of the Publishers.

### Suppliers

Gauge swatch, techniques, stitches, shapes and borders on pages 20–157 of the book are made using Simply DK by Paintbox Yarns (100% acrylic DK, 100g/3½oz, 276m/302yds). Yarns used for projects are detailed within their respective patterns.

All the yarns in this book are available from [www.woolwarehouse.com](http://www.woolwarehouse.com) and [www.hobbii.com](http://www.hobbii.com)

For details of alternative suppliers, please visit: [www.bellacococrochet.com](http://www.bellacococrochet.com)

Or the Search Press website:  
[www.searchpress.com](http://www.searchpress.com)

### About the author

For further inspiration, and for more information about Sarah-Jayne, visit:

- her website: [www.bellacococrochet.com](http://www.bellacococrochet.com)
- her YouTube channel, via @ bellacococrochet
- her Instagram page, via @ bellacococrochet

### Measurements

The projects in this book have been made using metric measurements, and the imperial equivalents provided have been calculated following standard conversion practices. The imperial measurements are often rounded to the nearest ¼in for ease of use except in rare circumstances; however, if you need more exact measurements, there are a number of excellent online converters that you can use. Always use either metric or imperial measurements, not a combination of both.

### Bookmarked Hub

For further ideas and inspiration, and to join our free online community, visit [www.bookmarkedhub.com](http://www.bookmarkedhub.com)

Leo Printer to place  
FSC logo here